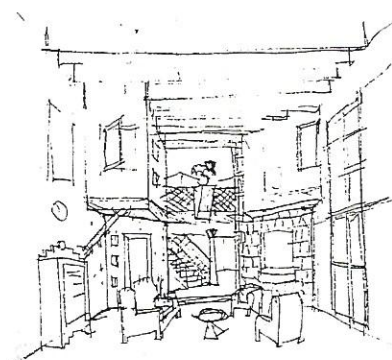
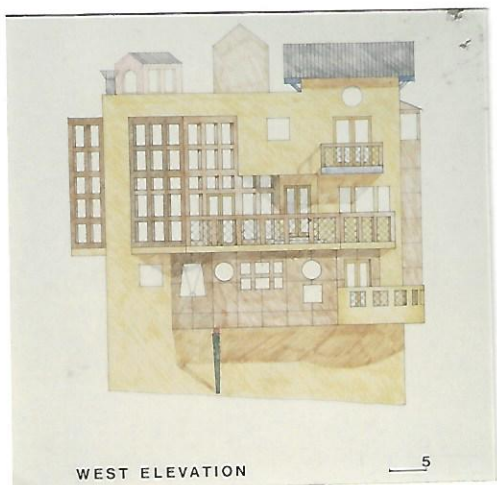
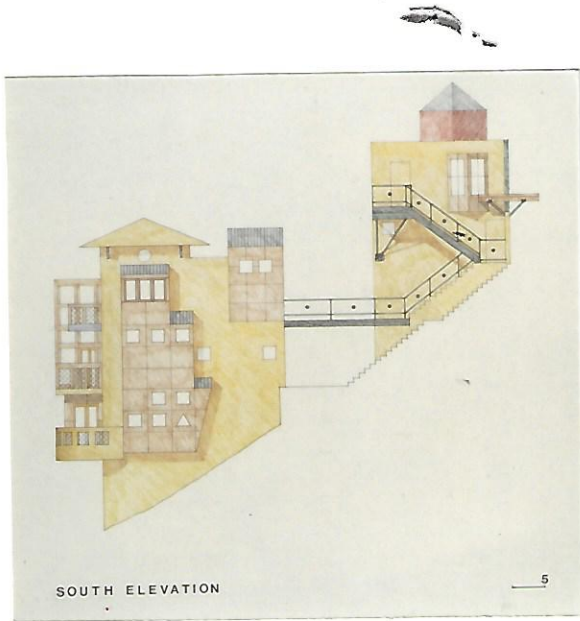
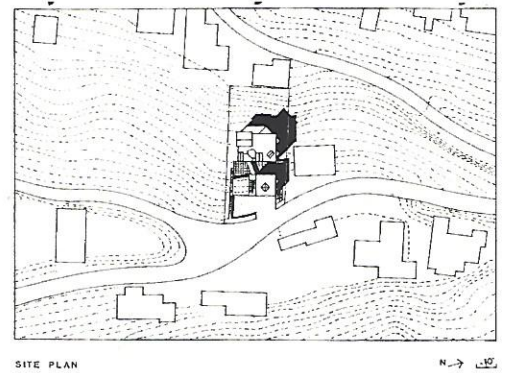


HILLSIDE HOUSE

Los Angeles, California

The house was separated into two buildings to create an image of a Tuscan Hillside Village, take advantage of views, provide an on-grade patio, and increase the sense of privacy from the road. The buildings were conceived as simple vertical boxes with a variety of architectural projections. The rectangular footprint minimizes the number of caissons and helped control costs. The house is zoned vertically into three areas. The top level is the more public and contains offices and entrance. The middle level is for communal activities and the lower level for bedrooms. Through construction documents.



LOWER LEVEL MAIN HOUSE PLAN

GARAGE LEVEL / MAIN HOUSE ROOF PLAN

MID LEVEL MAIN HOUSE PLAN

STUDIO LEVEL FLOOR PLAN

UPPER LEVEL MAIN HOUSE PLAN

1. MASTER BEDROOM	11. BRIDGE
2. BEDROOM	12. COURTYARD
3. CLOSET	13. GARAGE
4. KITCHEN	14. DECK
5. LIVING ROOM	15. STUDIO
6. DINING	16. ENTRY
7. POWDER ROOM	17. BREAKFAST
8. DEN	18. UPPER LIVING ROOM
9. WRITER'S OFFICE	19. BATH
10. OFFICE/MAID	