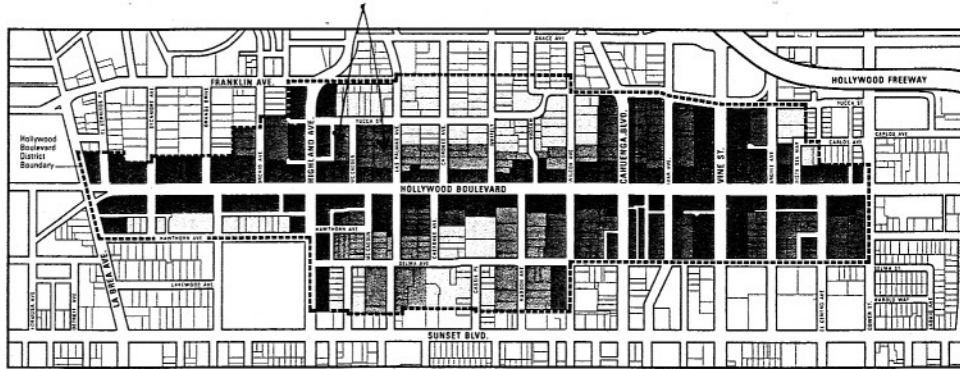


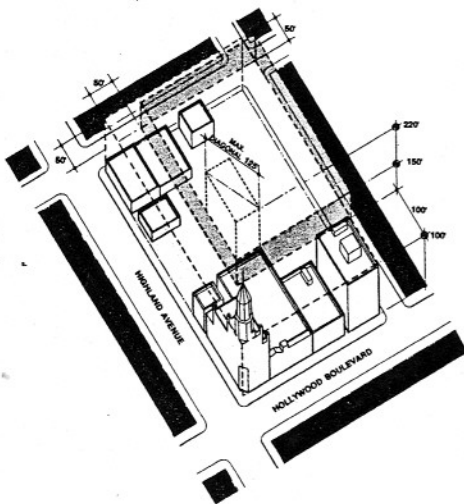
HOLLYWOOD BLVD DISTRICT URBAN DESIGN PLAN

Los Angeles, California

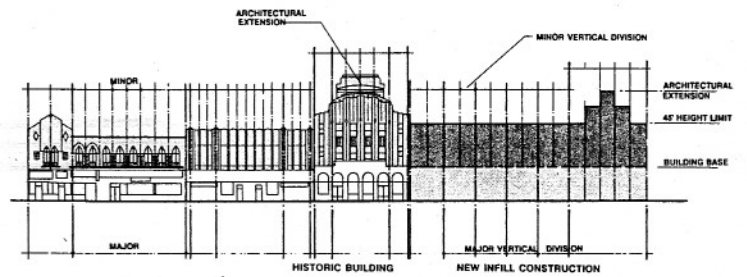
Member of a professional advisory committee composed of architects, planners, and developers selected by the district councilman to propose, review, and actively assist the CRA in the development of this 40 block plan. The Plan included policy recommendations on land use, urban conservation, cultural revitalization, open space, transportation, parking, building design guidelines, and implementation.



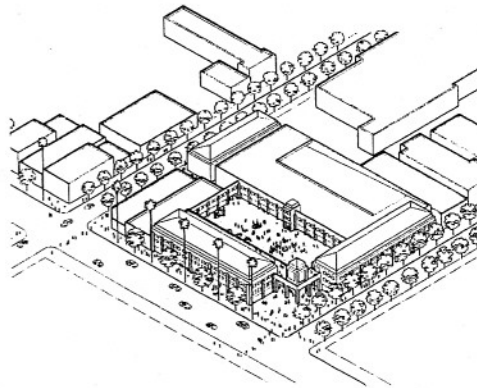
Land Use Plan



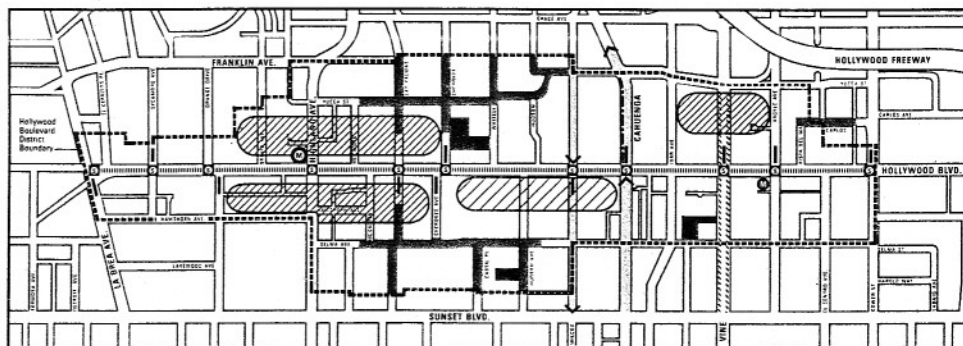
Building Design Guideline



Building Massing Guideline



Farmer's Market Plaza



Transportation, Parking Plan