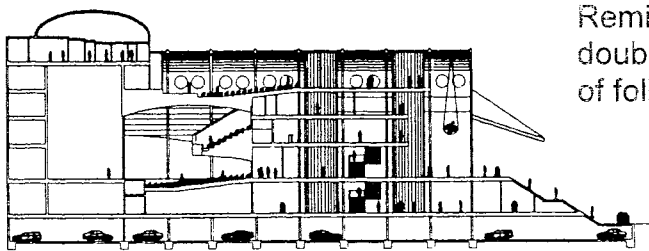


KOREAN CULTURAL CENTER COMPETITION ENTRY

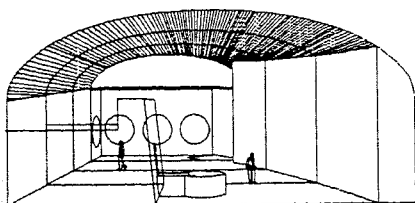
Los Angeles, California

A 5 acre urban site was the location for a proposed center intended to reaffirm Korean culture following the traumatic L.A. riots. In order to minimize the impact of dense development on the predominantly Hispanic single family neighborhood surrounding the complex on three sides and maximize access to the sun for a classical Korean garden, the complex opens on the east, west and south. The northern edge of the project contains a 5 story sloping slab with curving roof, symbolic of the mountains of southern Korea. As the real mountains, the slab acts as a backdrop for traditional gardens and temple sites. The slab contains the performing stage loft, artist-in-residence studios that overlook a galley courtyard, library, and museum space. Projecting from the slab is the performing arts wing

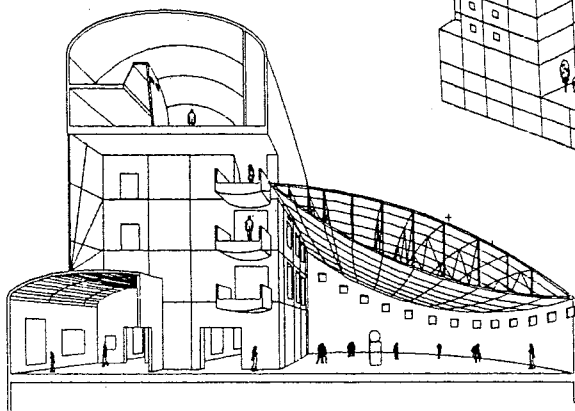
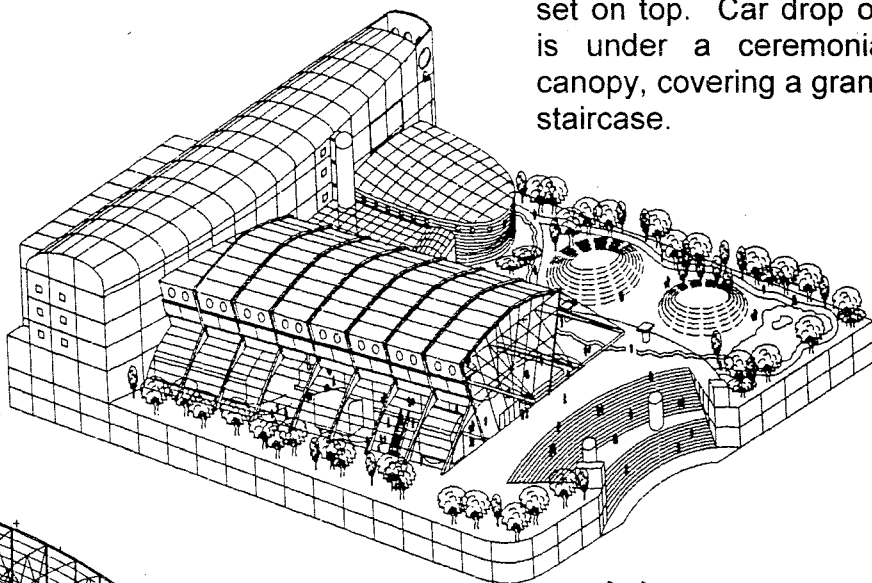
Reminiscent of a thirteenth century royal boat and a double curved exhibition gallery reflecting the form of folk baskets. The three elements sit on top of a 2- story plinth, which contains parking, revolving exhibition space below the open performance space, museum administrative offices and a classical Korean garden set on top. Car drop off is under a ceremonial canopy, covering a grand staircase.



SECTION C



LIBRARY LOOKING EAST



SECTION B

