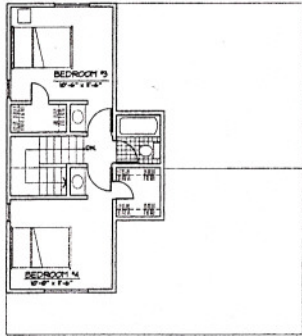


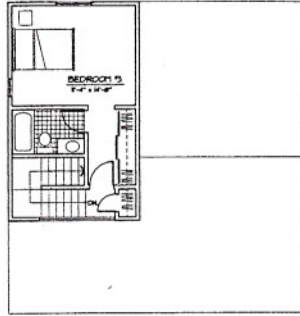
FISHER'S LANDING

Vancouver, Washington

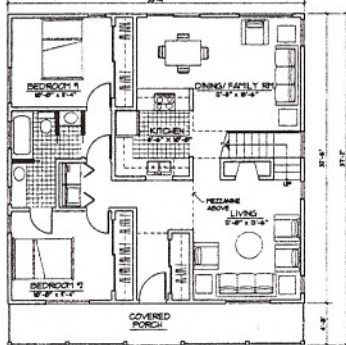
The design features a mix of styles, finishes and colors in street facades to provide the variety of architecture typical in older neighborhoods developed over time. Unsightly garage doors are removed from the street by placing them in the rear accessed by a shared driveway. Rear parking gives the developer options to provide one car garages, carport or just a pad in order to make the houses more affordable, yet still have cars parked out of sight.



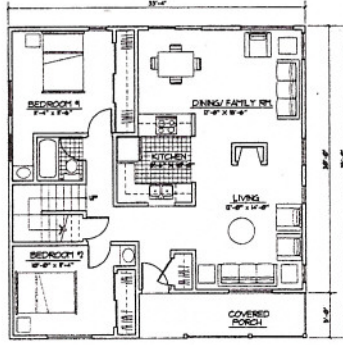
SECOND FLOOR - 4 BR 412# PLAN A



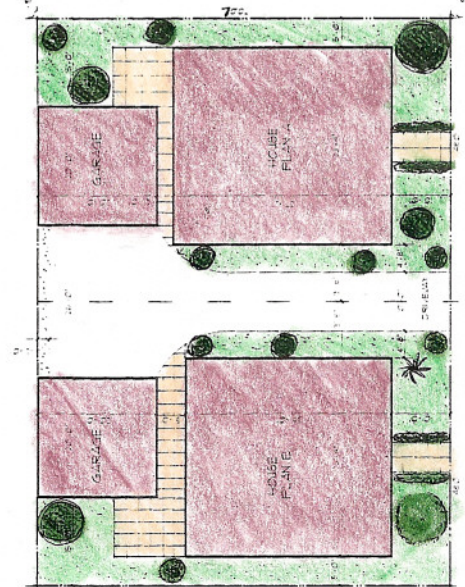
SECOND FLOOR - 3 BR 236# PLAN B



FIRST FLOOR - 2 BR, 3 BR, 4 BR 1080# PLAN A



FIRST FLOOR - 3 BR, 4 BR 1074# PLAN B



774

